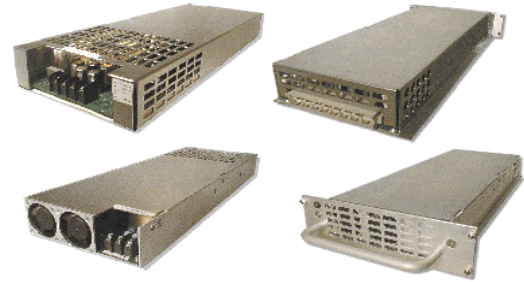


# FXP600 Lead acid charger series

## 600 Watt Switched Mode

### Features:

- Universal mains input (90-264Vac)
- Low profile - High density format
- Thermal protection as standard
- Active PFC to EN61000-3-2 class D
- Conforms to International safety regulations
- Optional 19" Rack (1U/4U Available) or chassis mount



Low Profile: 347x127x49.5 ( 1U optional )

**Description:** The FXP600 series offers a high performance / high efficiency battery charging source for numerous applications which may require a higher backup autonomy than usual. Its low profile make it particularly ideal for applications where space is critical. A host of standard options are available including temperature compensation and custom options are available where required ( contact sales ).

The product is fully designed to meet the international safety requirements of UL60950, CSA22.2 no 950 & 234 and EN60950 and CE marked to LVD.

### Specification:

Models available	FXP600-36: 40.5V / 14.8A	FXP600-96: 108V / 5.55A
FXP600-12: 13.5V / 44.4A	FXP600-48: 54V / 11.1A	FXP600-120: 135V / 4.44A
FXP600-24: 27.6V / 21.73A	FXP600-60: 67.5V / 8.88A	FXP600-240: 270V / 2.22A

#### Input

Input voltage : 90 – 264ac  
 Input freq. : 47 – 63Hz  
 Inrush current : < 30A (230Vac)  
 Earth Leakage : <2.5mA  
 PFC : > 0.98 to EN61000-3-2 class D

#### Output

Output voltage / currents: see table  
 Adjustment : ± 5%  
 Line regulation : ± 0.02%  
 Load regulation : ± 1%  
 Hold up time : 10mSecs from 220V full load  
 Minimum load : Not required  
 Dynamic reg. : 1% for 25% load change  
 Ripple & noise : 0.2% RMS, 1% pk to pk (DC – 30MHz)  
 Overload Protection : Electronic protection >110% constant I.  
 Over voltage protection : 115 – 125% crowbar cycle mains to reset  
 Temperature coefficient : 0.02%/°C  
 Max power : 600W  
 Thermal protection : Internal thermostat shuts down unit if internal rating exceeded  
 Cooling : Via 2 \* 40mm end fans

#### Options

Front Panel for 19" rack applications ( 1U or 4U )  
 Battery temperature compensation @ 0.2% Vout / °C  
 Enable or inhibit (HI or LO as required)  
 DC output OK signal via volt free relay  
 Mains powerfail : Provides TTL compatible 5mS warning  
 Active current Share: Provides 60:40% maximum share ratio  
 Internal series ORing diode for hot-swap applications  
 Voltage or current programming control:  
 ( 0-5Vdc or 0-10Vdc available) ± 1% accuracy  
 Current monitor signal: (0-5Vdc or 0-10Vdc @ 0 – full load. ± 1% accuracy)  
 10Vdc @ 1mA internal ref. supplied  
 Low battery disconnect signal ( @<1.75V/cell )

#### General

Efficiency: 80% typical  
 MTBF: >100,000 hrs to MIL217E @ 25°C  
 Dielectric strength:  
 4.25Kvdc input to Output  
 2.25Kvdc input to Earth  
 500Vdc output to Earth  
 Connections: 0.375" Beau screw terminals as standard - H15 DIN 41612 or M6 studs optional  
 Signals: 10 Way IDC header

#### Environmental

Operating Temperature:  
 -20c to +60°C De-rate at 2.5% /°C above 50°C  
 Storage Temperature:  
 -25°C to + 85°C  
 Operating humidity:  
 0 to 95% RH non-condensing

#### Safety & EMC

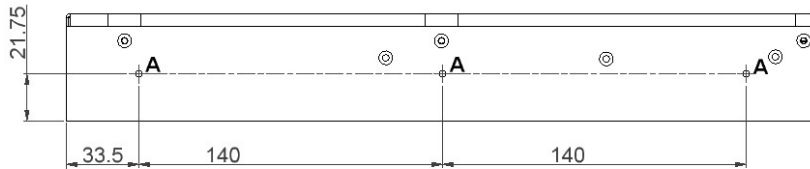
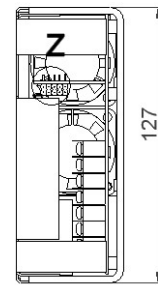
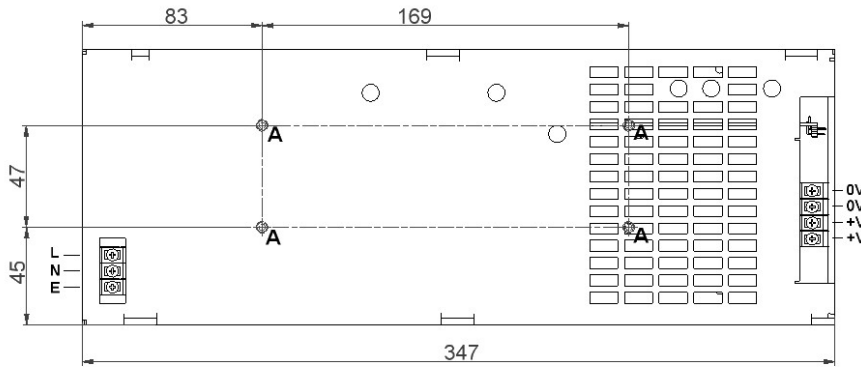
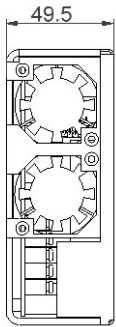
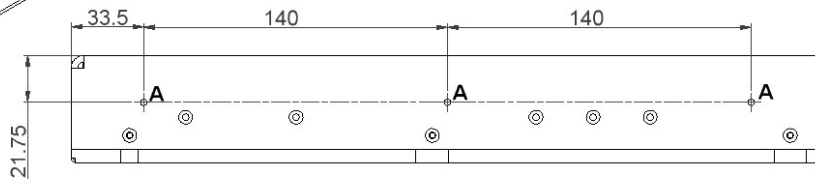
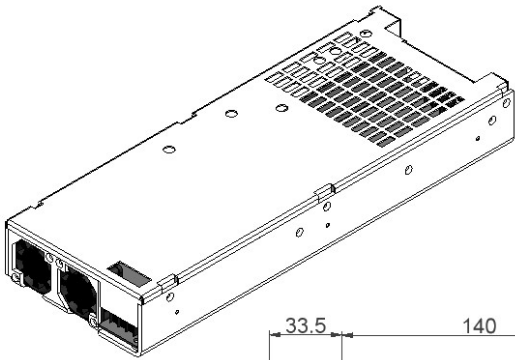
Isolation, input to earth : 2.5kVdc, >2.5mm  
 Isolation, input to output : 4.25KVdc, >6.4mm  
 Isolation, output to earth : 500Vdc  
 (unless commoned)  
 Units designed to meet: EN60950, UL60950, CSA 22.2 No. 950 & 234  
 Emissions designed to meet: EN55022-A (conducted)  
 EN55022-A (radiated)

Immunity designed to meet:

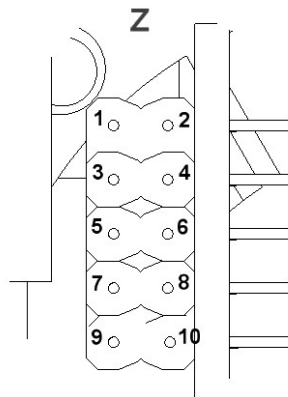
- EN61000-4-2 (ESD)
- EN61000-4-3 (RAD)
- EN61000-4-4 (FAST TRANS)
- EN61000-4-5 (SURGE)
- EN61000-4-6 (CONDUCTED)
- EN61000-4-8 ( MAGNETIC )
- EN61000-4-11 (VOLTAGE DIPS & FLUCTUATIONS)
- EN61000-3-2 ( MAINS HARMONICS )
- EN61000-3-3 ( VOLTAGE FLUCTUATIONS )

# FXP600 SERIES

## Mechanical Details and Connections



A = 13x M3 BUSH



PIN	DESCRIPTION
1	TEMP COMP (1)
2	I SHARE
3	CHARGER FAIL N/C
4	0V
5	CHARGER FAIL COM
6	N/C
7	CHARGER FAIL N/O
8	POWERFAIL-TTL
9	N/C
10	TEMP COMP (2)